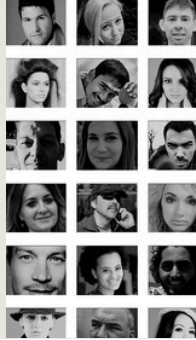


# AI and the Church: Faithful Leadership in a Rapidly Changing World.



## Participant Worksheet Presented by: Matt Shandera, April 30, 2026

*Navigating a Pivotal Moment in Human History.*

*"We are in a very pivotal, very informative moment in human existence." Matt Shandera*

### SECTION 1: The Landscape - What We're Facing

AI is reshaping work, relationships, and daily life at a pace few anticipated. As church, ministry, and business leaders, we are uniquely positioned to engage and lead the way. Review the data below and reflect on what it means for your community.

#### Key Statistics

**20%**

of organizations plan to use AI to eliminate more than half of middle management positions by 2026 (Gartner)

**19%**

of high school students already know someone in - or are personally in - a romantic relationship with an AI chatbot

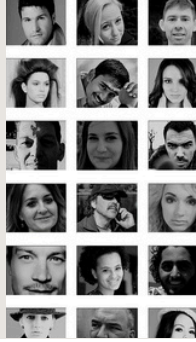
**43%**

of teens say they'd rather trust AI than talk to their parents about personal matters.

**64%**

of teens use AI chatbots daily - up dramatically from just months ago (Pew Research, early 2025)

# AI and the Church: Faithful Leadership in a Rapidly Changing World.



## Reflection Questions

**Which statistic surprised or concerned you most? Why?**

**How is AI already showing up in your church, ministry, business, or community?**

---

## SECTION 2: Three Pillars for the Church's Response

The church has a vital role to play in this moment. These three principles can guide your ministry's approach to AI.

### **PILLAR 1: Leverage AI for Scale & Efficiency**

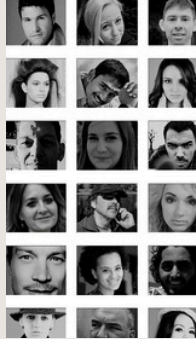
AI is a tool that enables you to move more efficiently while increasing the impact of your church, ministry, or business. Avoiding it out of fear or moral objection does not protect your people; it limits your capacity to serve them.

### **What could AI help your ministry do more efficiently?**

- Administrative Tasks (communications, scheduling, follow-up)
- Sermon research, content creation, and resource development
- Note summarization and theme identification for thoughtful follow-up
- Other: \_\_\_\_\_

**Where do you feel most limited in capacity right now? How might AI address that?**

# AI and the Church: Faithful Leadership in a Rapidly Changing World.



## **PILLAR 2: Grow Your Ministry of Presence**

There is one thing AI can never do: truly care for a person's soul, pointing them to a relationship with a Living God. Human presence, genuine empathy, and authentic relationships are the church's irreplaceable values. AI frees us to do more of what only we can do.

**What does "ministry of presence" look like in your context today?**

**If AI handles more administrative tasks, how would you reinvest that time?**

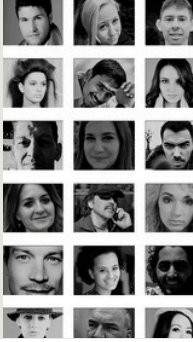
*AI will give you the opportunity to do more of what matters and less of the administrative tasks.*

## **PILLAR 3: Steward the Truth**

The church has stewarded truth throughout its entire existence. In an age of AI-generated content, deepfakes, and misinformation, that calling is more urgent and more valuable than ever before.

AI can generate convincing text, audio, images, and video. Your church, ministry, or business needs protocols to verify what is authentic.

# AI and the Church: Faithful Leadership in a Rapidly Changing World.



**What verification practices does your team currently use? What's missing?**

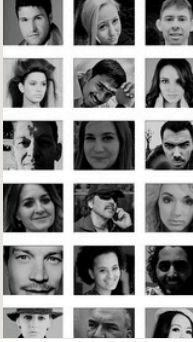
**How can your church, ministry, or business be a trusted voice for truth in your community?**

## **SECTION 3: Building Your Ministry's AI Framework**

Every church, ministry, and business needs a clear, intentional, proactive stance on AI. Use these questions to begin shaping your organization's approach.

- 1. What opportunities do we believe AI has created for advancing our unique mission, and where do we feel caution?**
- 2. How do we intend to use AI in our context?**
- 3. How will we grow our ministry of presence as AI handles more tasks?**
- 4. What ethical boundaries or guardrails will we put in place?**

# AI and the Church: Faithful Leadership in a Rapidly Changing World.



## My Next Step

One specific action I will take this week:

*The church holds something AI never can: a personal relationship with Jesus, and the ability to truly love and care for people. That is our greatest mandate and our greatest advantage in this season.*